

# Draft Strategic Results Framework: Greater Mekong Sub-region (GMS) Health Cooperation Strategy 2019 to 2023

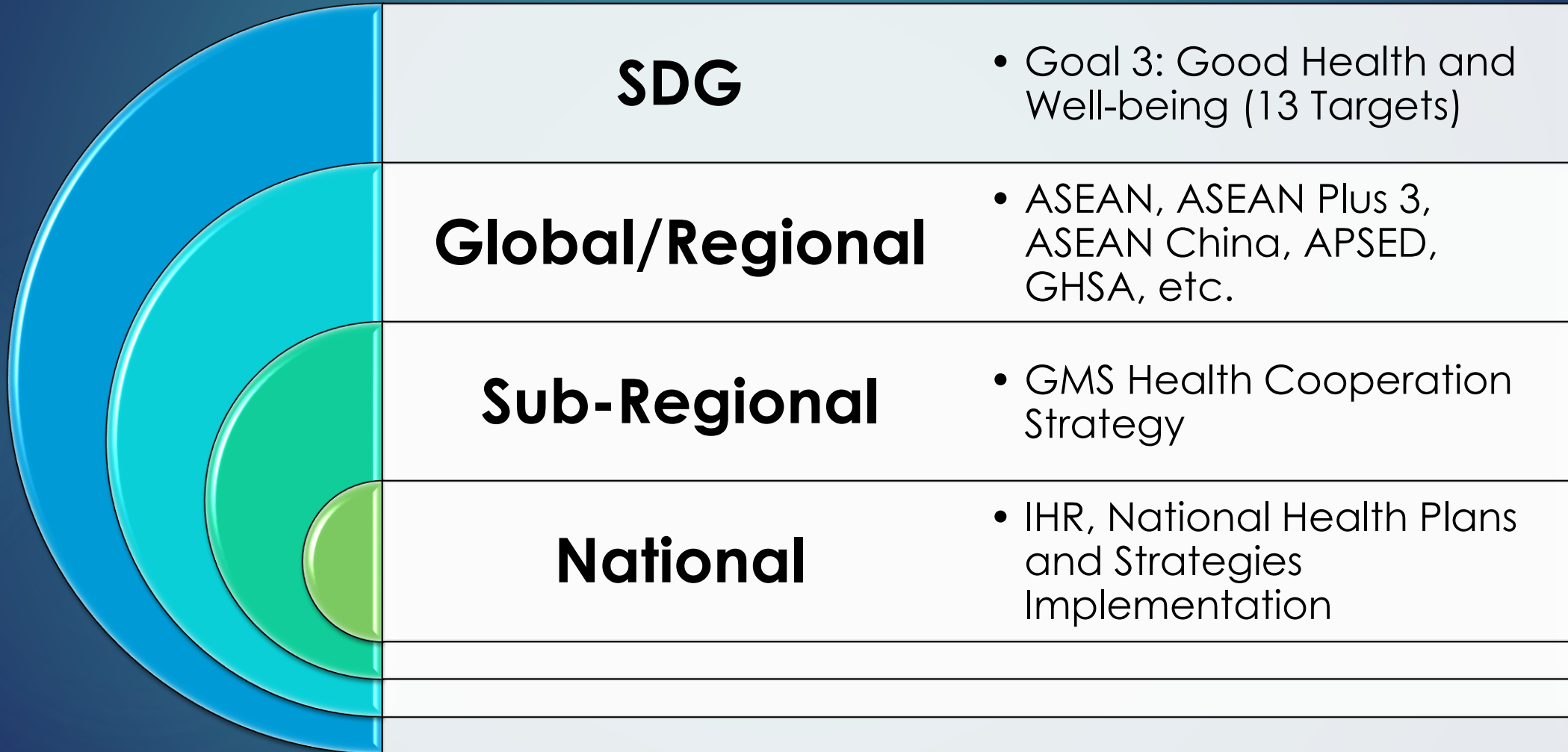
12 TO 13 DECEMBER 2019

BANGKOK, THAILAND

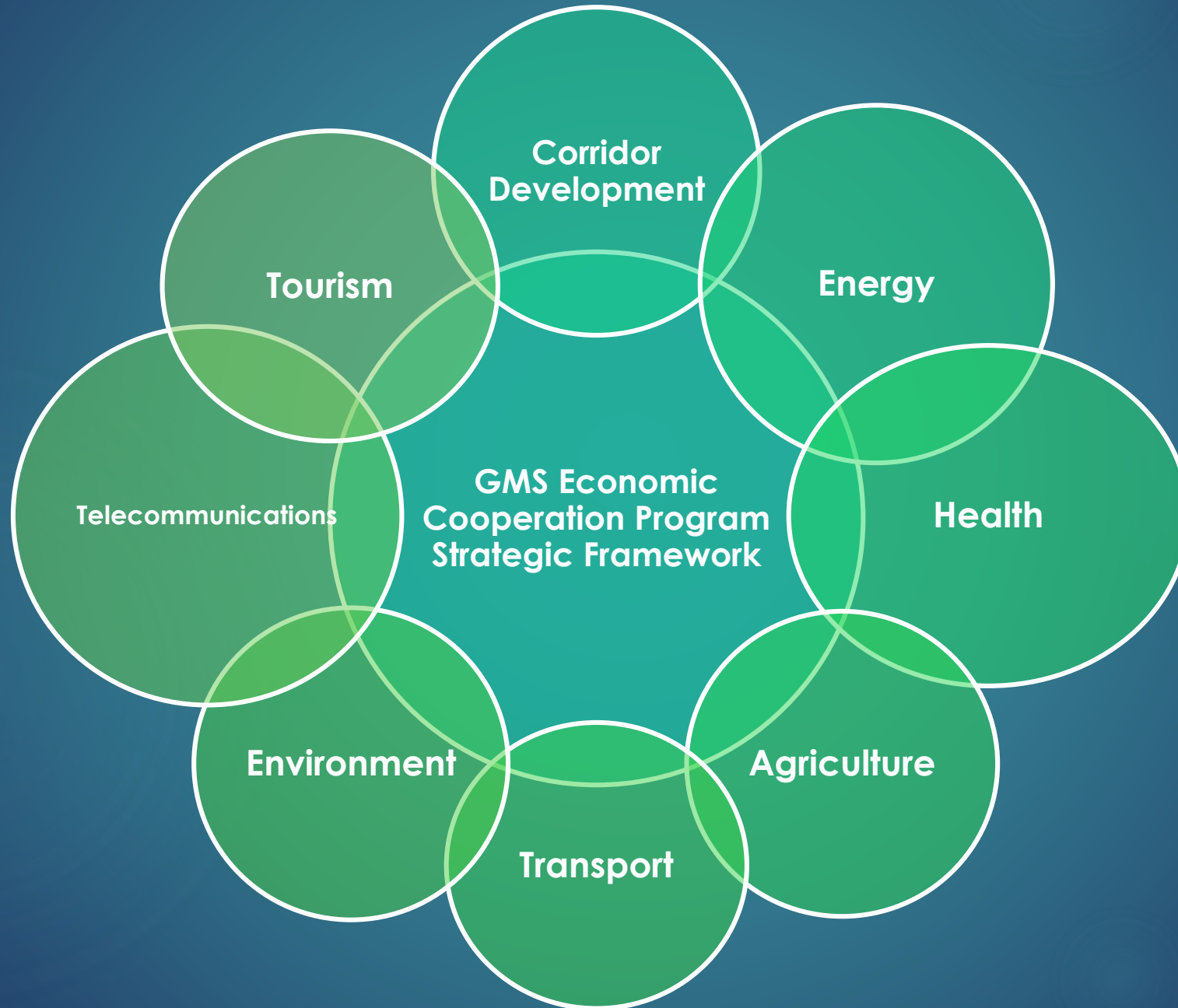
# Background

CONTEXT AND PROCESS

# Context

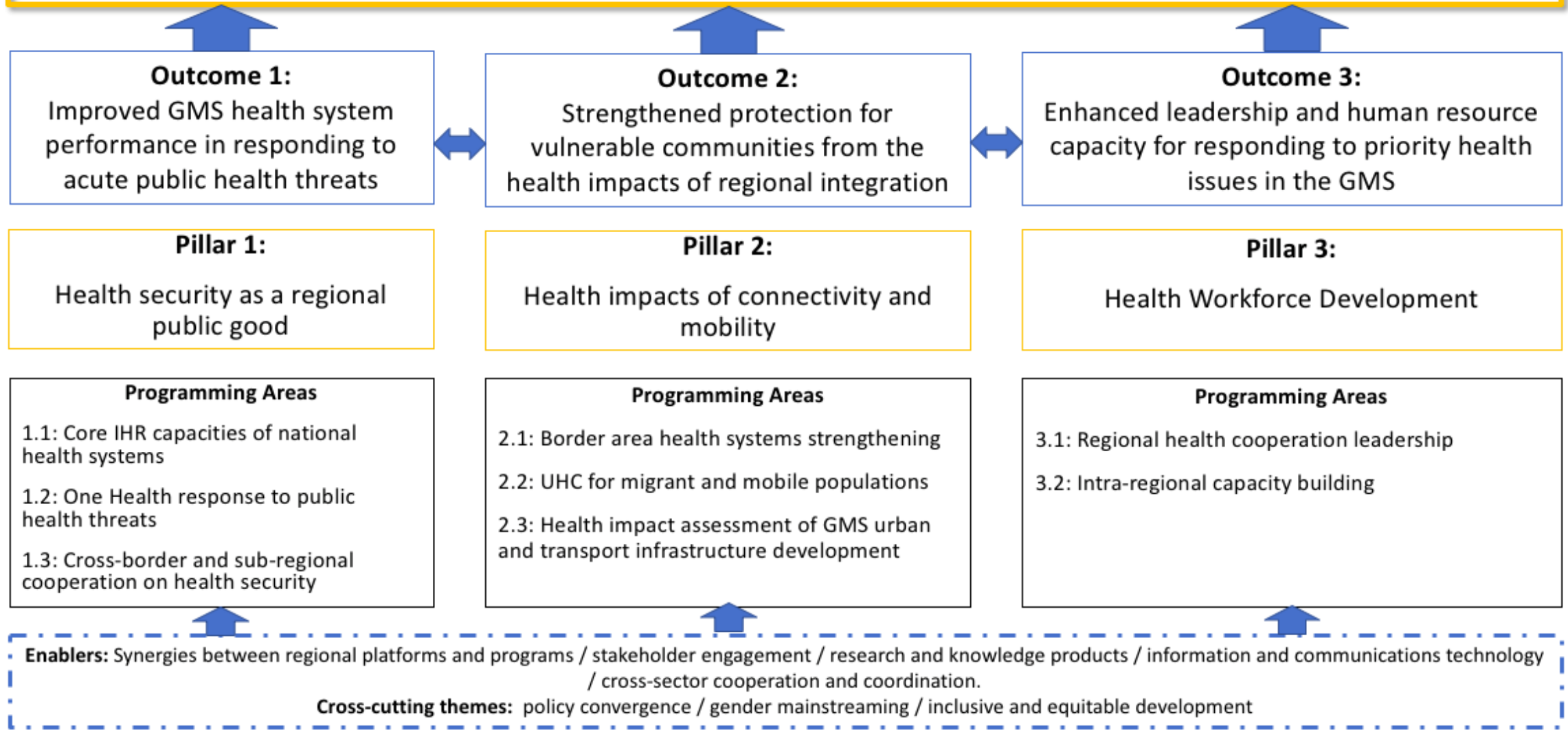


# GMS Economic Cooperation Program



## GMS Health Cooperation Strategy

Long-term Vision: Health and well-being shared by all in an integrated, prosperous, and equitable sub-region.





# Process

## GMS Health Cooperation Strategy 2019 to 2023

- The Strategy was endorsed by the Ministries of Health of the GMS countries from January to April 2019.

## Strategic Results Framework

- The Strategy highlighted the need for a Strategic Results Framework (SRF) to assist the Working Group for Health Cooperation (WGHC) in systematically monitoring and evaluating the implementation and effectiveness of the Strategy.

## Regional Action Plan

- A Regional Action Plan (RAP) was also required to define annual WGHC priority interventions that would contribute to achieving strategic outcomes as defined in the SRF.

# Developing the SRF

- ▶ **26 to 27 September 2019:** WGHC representatives from all GMS countries attended a two-day workshop in Bangkok, Thailand to discuss and develop the SRF and the RAP.
- ▶ **October to November 2019:** The Regional Secretariat sought written inputs from GMS countries and Development Partners' (DP) to the draft SRF and RAP.

# Objectives of the SRF

- 1) Guide the WGHC in annual tracking of the Strategy's implementation from 2019 to 2023
- 2) Provide the WGHC with the framework and data that would enable the WGHC to assess the value-add and effectiveness of the Strategy.



# Scope of the SRF

- ▶ Measure strategic outcomes from programming areas defined by the *GMS Health Cooperation Strategy*
- ▶ Dependent on how the strategy is implemented (Annual Regional Action Plan of the WGHC, projects implemented and monitored under the Regional Investment Framework, cross-border MOUs related to health, etc.)
- ▶ Duration: 2019 to 2023
- ▶ WGHC Ownership
  - ▶ Regional Secretariat support to WGHC M&E functions



# Draft Strategic Results Framework 2019 to 2023

# Overview

- ▶ 8 Key Performance Area of the SRF correspond directly to the 8 Key Programming Areas of the Strategy
- ▶ 19 KPIs and 8 optional KPIs
  - Optional KPIs are only applicable to countries who are able to conduct a 2<sup>nd</sup> round of the Joint External Evaluation (JEE) from 2019 to 2023.
- ▶ Quantitative and qualitative KPIs (Note: KPIs should not be analyzed in isolation)
- ▶ Updated annually subject to WGHC discretion and guidance

# Strategic Outcome 1: Improved GMS health system performance in responding to public health threats

## Performance Areas

1.1: Core International Health Regulation (IHR) Capacities of National Health Systems

## Key Performance Indicators

**KPI 1.1.1:** Annual increase in the overall average numerical IHR State Parties Self-Assessment Annual Reporting (SPAR) ratings by at least 20% compared to the previous year's baseline for countries with a red and yellow SPAR rating; Countries with a green SPAR rating in the baseline year (2018) are able to maintain their green rating.

**KPI 1.1.a (Optional):** *At least 20% increase in the overall average Joint External Evaluation (JEE) numerical score for countries undertaking a round 2 of the JEE.*

# Strategic Outcome 1: Improved GMS health system performance in responding to public health threats

## Performance Areas

1.2: One Health Response to Public Health Threats

## Key Performance Indicators

For the following three indicators, annual increase in the numerical IHR State Parties Self-Assessment Annual Reporting (SPAR) ratings by at least 20% compared to the previous year's baseline for countries with a red and yellow SPAR rating; Countries with a green SPAR rating in the baseline year (2018) are able to maintain their green rating.

- a) KPI 1.2.1:** SPAR C2.2 – Multisectoral IHR coordination mechanisms (infectious diseases, zoonoses, food safety, chemical safety, radiation emergencies)
- b) KPI 1.2.2:** SPAR C3.1 – Collaborative effort on activities to address zoonoses
- c) KPI 1.2.3:** SPAR C4.1 – Multisectoral collaboration mechanism for food safety events



# Strategic Outcome 1: Improved GMS health system performance in responding to public health threats

## Performance Areas

1.2: One Health Response to Public Health Threats

## Key Performance Indicators

For countries undertaking a round 2 of JEE, a one level increase in the JEE numerical score for countries with 1 to 3 ratings for the following indicators (Note: Countries with 4 to 5 ratings are able to maintain their ratings):

- a) **KPI 1.2.a (Optional):** JEE P.2.1 – A functional mechanism is established for the coordination and integration of relevant sectors in the implementation of IHR
- b) **KPI 1.2.b (Optional):** JEE P.4.3 – Mechanisms for responding to infectious and potential zoonotic diseases are established and functional
- c) **KPI 1.2.c (Optional):** JEE P.5.1 – Mechanisms for multisectoral collaboration are established to ensure rapid response to food safety emergencies and outbreaks of foodborne diseases
- d) **KPI 1.2.d (Optional):** JEE P.6.1 – Whole of Government biosafety and biosecurity system is in place for human, animal and agricultural facilities
- e) **KPI 1.2.e (Optional):** JEE R.3.1 – Public health and security authorities (e.g. law enforcement, border control, customs) are linked during a suspect or confirmed biological event

# Strategic Outcome 1: Improved GMS health system performance in responding to public health threats

## Performance Areas

1.2: One Health Response to Public Health Threats

## Key Performance Indicators

**KPI 1.2.4:** Health projects under the RIF 2022, activities identified in the WGHC Annual Workplans, and/or cross-border (province-to-province) health-related MOUs have contributed to improving countries' One Health response capacity to public health threats.

# Strategic Outcome 1: Improved GMS health system performance in responding to public health threats

## Performance Areas

1.3: Cross-border and Sub-regional Cooperation on Health Security

## Key Performance Indicators

**KPI 1.3.1:** Increasing number and/or scope of priority cross-border and sub-regional activities being implemented to operationalize existing cross-border (province to province) health-related MOUs or LOAs

**KPI 1.3.2:** Implementation of the Strategy have contributed to the development and effective implementation of new and/or newly amended health MOUs or LOAs between GMS countries at the national and/or provincial levels

## Strategic Outcome 2: Strengthened protection for vulnerable communities from the health impacts of regional integration

### Performance Areas

2.1: Border area health system strengthening

### Key Performance Indicators

For the following two indicators, annual increase in the numerical IHR State Parties Self-Assessment Annual Reporting (SPAR) ratings by at least 20% compared to the previous year's baseline for countries with a red and yellow SPAR rating; Countries with a green SPAR rating in the baseline year (2018) are able to maintain their green rating.

- a) **KPI 2.1.1:** SPAR C11.1 – Core capacity requirements at all times for designated airports, ports and ground crossings (including capacity to respond to events that may constitute a public health emergency of international concern)
- b) **KPI 2.1.2:** SPAR C11.2 – Effective public health response at points of entry.



## Strategic Outcome 2: Strengthened protection for vulnerable communities from the health impacts of regional integration

### Performance Areas

2.1: Border area health system strengthening

### Key Performance Indicators

For countries undertaking a round 2 of JEE, a one level increase in the JEE numerical score for countries with 1 to 3 ratings for the following indicators (Note: Countries with 4 to 5 ratings are able to maintain their ratings):

- a) **KPI 2.1.a (optional):** JEE PoE.1 – Routine capacities established at points of entry
- b) **KPI 2.1.b (optional):** JEE PoE.2 – Effective public health response at points of entry



## Strategic Outcome 2: Strengthened protection for vulnerable communities from the health impacts of regional integration

### Performance Areas

2.1: Border area health system strengthening

### Key Performance Indicators

**KPI 2.1.3:** Health projects under the RIF 2022, activities identified in the WGHC Annual Workplans, and/or cross-border (province to province) health MOUs have contributed to strengthening the quality of health systems along priority border areas

## Strategic Outcome 2: Strengthened protection for vulnerable communities from the health impacts of regional integration

### Performance Areas

2.2: Universal Health Care (UHC) for migrant and mobile populations

### Key Performance Indicators

**KPI 2.2.1:** Health projects under the RIF 2022, activities identified in the WGHC Annual Workplans, and/or cross-border (province to province) health-related MOUs have contributed to improving access, coverage, and quality of essential health services for migrants and mobile populations along the GMS borders

**KPI 2.2.2:** Annual increase of 2.0% to 4.0% for the UHC Index of Service Coverage (SCI) for each GMS country

## Strategic Outcome 2: Strengthened protection for vulnerable communities from the health impacts of regional integration

### Performance Areas

2.3: Health Impact Assessment (HIA) of GMS Urban and Transport Infrastructure Development

### Key Performance Indicators

**KPI 2.3.1:** Newly approved projects of the GMS Urban and Transport sectors, located in Special Economic Zones and focused on road safety, have either an HIA, Environmental Impact Assessment (EIA), or Environmental Health Impact Assessment (EHIA)

# Strategic Outcome 3: Enhanced human resource capacity to respond to priority health issues in the GMS

## Performance Areas

3.1: Regional Health Cooperation Leadership

## Key Performance Indicators

**KPI 3.1.1:** At least 80% annual completion of actions identified in the previous annual WGHC meeting and the Regional Action Plan.

**KPI 3.1.2:** GMS countries have incorporated relevant cross-cutting themes (e.g. in-country policy convergence, gender mainstreaming, and inclusive and equitable development) and enablers in the design of new projects and WGHC Annual Workplan activities.

**KPI 3.1.3:** Increasing number of new sub-regional projects (investment and technical assistance) funded under the RIF 2022.

**KPI 3.1.4:** WGHC provides timely support and advocacy to address emerging and re-emerging public health threats and emergencies.



# Strategic Outcome 3: Enhanced human resource capacity to respond to priority health issues in the GMS

## Performance Areas

3.2: Intra-regional capacity building

## Key Performance Indicators

**KPI 3.2.1:** Sex disaggregated number of public health personnel who participated (trainer and trainee) in WGHC-defined intra-regional capacity building activities, learning exchanges, and information sharing among GMS countries on health (e.g. medicine, nursing, public health, field epidemiology, traditional and indigenous medicines, health research, etc.) between the period from 2019 to 2023.

**KPI 3.2.2:** WGHC-defined intra-regional capacity building activities, learning exchanges, and information sharing contributed to positive changes in institutional processes and performance of beneficiary agencies.



# Data Gathering and Reporting

- ▶ M&E role of the Regional Secretariat, guided by the WGHC
  - Annual Report of Progress and Achievements submitted to the WGHC for deliberations during the annual WGHC meeting
- ▶ M&E Guidance Document for the Regional Secretariat
- ▶ WGHC internal mid-term review of the Strategy by 2021 (Formative)
- ▶ WGHC internal end-of-strategy review by 2023 (Summative)

Thank you



# Draft Regional Action Plan (RAP) for 2020

12 TO 13 DECEMBER 2019

# Objectives of the RAP

- ▶ Operationalizes the *GMS Health Cooperation Strategy* through detailing regional activities required to achieve strategic outcomes measured by the Strategic Results Framework.

# Scope of the RAP

1. WGHC Annual Workplan
2. Existing and new health projects under the RIF 2022
  - Includes relevant ADB and DP-supported projects
3. Cross-border (province-to-province) health-related MOUs/LOAs between GMS countries



# Responsibilities

- ▶ WGHC is responsible for ensuring that activities under the RAP are implemented.
- ▶ Regional Secretariat monitors progress of RAP implementation through quarterly checks and informs the WGHC

# Points to Consider:

1. Current draft RAP is only for 2020; some activities identified may be the first among many steps required to achieve the KPIs (ex. scoping/needs assessment and establishing relationships).
2. Countries can propose and take the lead in developing a regional activity. Other countries may participate in the regional activity as they see fit.
3. Specifics of the proposed activities will need to be designed/threshed out by the proponent country with support from the Regional Secretariat (ex. develop ToRs and/or project proposals)

# Guidelines in the Proposed Annual Updating of the RAP

Activities should:

1. Follow through from the previous year's activities
2. Be consistent with WGHC functions as defined in its Terms of Reference
3. Focus on Key Performance Areas of the SRF

Activities outside of the Key Performance Areas could be programmed subject to the approval of the WGHC.

# Regional Action Plan for 2020

## Programming Areas

Programming Area 1.1: Core IHR capacities of national health systems

## Priority 2020 Activities

### **WGHC Activity:**

- a) Identify gaps in national public health laboratories capacity for interested GMS countries (Note: Regional Secretariat to coordinate and confirm interest of countries)
- b) CLMV countries to provide update on key actions related to their most recent JEE recommendations (Note: short report/presentation shared in the WGHC annual meetings, starting 2020)

### RIF 2022:

- a) Cambodia and Lao PDR: Lab capacity improvement (e.g. referral network, Human Resource capacity, and the use of ICT)
- b) Viet Nam: Proposal for additional grant funding for the existing GMS Health Security Project to provide training, workshop, etc. for border provinces and districts (2020 to 2023). Cambodia: Focus areas should prioritize: support to cross border collaboration activities, project manager meeting, RSC and other regional events.
- c) Viet Nam: New Project to invest in equipment for provincial CDC units to enhance core IHR capacity (2020 to 2023)
- d) Lao PDR: Additional funding for existing Health Security Project



# Regional Action Plan for 2020

## Programming Areas

Programming Area 1.2:  
One Health response to  
public health threats

## Priority 2020 Activities

### **WGHC Activity:**

- a) GMS countries to provide the Secretariat with updates on activities for One Health Day (November 3) to be uploaded in the WGHC website.
- b) Investigate and explore gaps in each country related to food safety (ex. food safety system and stakeholders, AMR), using most recent JEE reports and WHO advice/recommendations.

### RIF 2022:

- a) Lao PDR: How the Ministry of Health can work with other ministries (Trade) on food safety related to import and export of goods, in-country inspection and quality control.



# Regional Action Plan for 2020

## Programming Areas

Programming Area 1.3:  
Cross-border and sub-  
regional cooperation on  
health security

## Priority 2020 Activities

### **WGHC Activity:**

- a) Stocktake on cross-border (province-to-province) MOUs in the GMS as the baseline for monitoring and measuring progress under the SRF, including an analysis of extent existing joint action is being implemented.
- b) Case study to assess outcomes and gather best practices of regional cooperation or cross-border action (ex. contribution to policy development, recognition and support from central office, sustainability/budget availability to sustain cross-border activities, clarify value and definition of an effective regional cooperation).
- c) Highlight the value-add of the WGHC in communications and in M&E (ex. through new MOUs attributable to WGHC actions)

# Regional Action Plan for 2020

## Programming Areas

Programming Area 2.1:  
Border area health system  
strengthening

## Priority 2020 Activities

WGHC Activity:

- a) Development of core capacity in POEs through organizing training of personnel in the use of and enforcement of border controls, based on WHO Core Capacity Assessment findings
- b) Operationalize referral system between countries through establishing bilingual medical certificates
- c) Conduct research on the socio-economic impact of the absence of migrant workers to receiving countries and origin countries
- d) Explore a mechanism of transferring patients within the GMS (i.e. expand current practice to the national level, policy required, feasibility, revision of existing MOUs, etc)

# Regional Action Plan for 2020

## Programming Areas

Programming Area 2.1:  
Border area health system  
strengthening

## Priority 2020 Activities

RIF 2022:

- a) RIF: Healthy Border for SEZ (identify specific action for this project once project is confirmed)

Cross-border:

- a) Expand sister hospital frameworks between two countries (ex. Thailand-Myanmar) to achieve better quality of health systems between borders

# Regional Action Plan for 2020

## Programming Areas

Programming Area 2.2:  
UHC for migrant and  
mobile populations

## Priority 2020 Activities

WGHC Activity:

- a) Share resources, information, and materials on UHC; Tap experts on UHC
  - Learn from the EU experience, existing IOM studies, Philippine experience, and the Dec 2019 WGHC meeting on how to address undocumented migrants with the aim of identifying which model is applicable to the GMS.
- b) Implement activities to raise awareness among MMPs (documented and undocumented) on their rights and on available health services.
- c) Regional Secretariat to update the WGHC on the ADB Fund related to Health Insurance for Registered Migrants / Ensure involvement of the WGHC members in the design, Technical Assistance, and guidance to ADB in project preparation



# Regional Action Plan for 2020

## Programming Areas

Programming Area 2.3:  
Health impact  
assessment of GMS  
urban and transport  
infrastructure  
development

## Priority 2020 Activities

WGHC Activity:

- a) Convene meeting between WGHC and GMS Working Group on Infrastructure, Transport, and Urban Development to scope and identify key issues and action points related to HIA, EIA, and EHIA. Identified issues will be the basis of planning future activities under the RAP.



# Regional Action Plan for 2020

## Programming Areas

Programming Area 3.1:  
Regional health  
cooperation leadership

## Priority 2020 Activities

WGHC Activity:

- a) WGHC provides the Regional Secretariat with updates on activities for the monthly updating of the WGHC website
- b) Inclusion in the agenda of the December annual WGHC meetings (starting in 2020) of a session to reflect on the WGHC work and strategy implementation progress
- c) WGHC uses the annual one-page summary of key achievements (developed by the Regional Secretariat) as an internal advocacy note
- d) WGHC to discuss and explore options on sustainable financing for the WGHC (ex. seed fund, proposal to extend Secretariat support to the WGHC)

# Regional Action Plan for 2020

## Programming Areas

Programming Area 3.1: Regional health cooperation leadership

## Priority 2020 Activities

WGHC Activity (continued):

- e) Identify opportunities to build WGHC internal capacities on specific issues (ex. UHC, MMP, advocacy, etc). This could be in the form of a half-day session on country sharing of these issues, field trips or study visits, etc. held back-to-back from scheduled meetings.
- f) Internal and external advocacy of WGHC activities within MOH, with other Ministries, and with other regional partners / Enhancing WGHC Visibility
- g) Quarterly tracking of RAP implementation progress by the Regional Secretariat
- h) Request Development Partner presentation of updates as a regular agenda for WGHC annual meetings.
- i) Identify Thematic Focal Points per theme (Note: 1 Lead and 1 Co-Lead). Regional Secretariat to contact GMS focal points and solicit nominations for Thematic Focal Points on the following:
  - UHC; Migrant Health; IHR / Health Security; Cross-Border; Communications; and Gender Mainstreaming

# Regional Action Plan for 2020

## Programming Areas

Programming Area 3.2: Intra-regional capacity building

## Priority 2020 Activities

WGHC Activity:

- a) Thailand: Collaboration between Thailand and the Regional Secretariat on Capacity Building for Public Health emergencies and preparation for health hazards (Note: broaden the topic in 2020)
- b) Thailand: Organize workshop as part of the Health Security Project (Note: expand invitation to China) to discuss Laboratory Human Resource Capacity, Hospital Management and Waste Product Management in Hospitals.
- c) China: Explore potential application for funding WGHC activities under the existing China-GMS fund once the WGHC Annual Workplan and RAP are finalized.
- d) Myanmar-Viet Nam: Proposed training of public doctors in the field of radiation oncology and cardiology to support the new National Cancer Institute in Myanmar.

# Regional Action Plan for 2020

## Programming Areas

Programming Area 3.2:  
Intra-regional capacity  
building

## Priority 2020 Activities

WGHC Activity:

- a) Thailand: Collaboration between Thailand and the Regional Secretariat on Capacity Building for Public Health emergencies and preparation for health hazards (Note: broaden the topic in 2020)
- b) Thailand: Organize workshop as part of the Health Security Project (Note: expand invitation to China) to discuss Laboratory Human Resource Capacity, Hospital Management and Waste Product Management in Hospitals.
- c) China: Explore potential application for funding WGHC activities under the existing China-GMS fund once the WGHC Annual Workplan and RAP are finalized.
- d) Myanmar-Viet Nam: Proposed training of public doctors in the field of radiation oncology and cardiology to support the new National Cancer Institute in Myanmar.

RIF 2022:

- a) China: RIF could explore extension of TA support to China and Thailand



# General Inputs/Feedback

1. One year Regional Action Plan for 2020 with annual updating/planning of succeeding activities VS Multi-year (2020 to 2023) Regional Action Plan?
2. Inclusion of actions related to other DP-supported regional initiatives covered by the RIF?
3. No regional activities or RIF projects identified on preparedness and Antimicrobial Resistance
4. Draw upon existing WHO advice/recommendations on improving One Health response to public health threats and in Core Capacity Assessment for PoEs.



# Next Step:

- Side meeting between WGHC focal persons and the Regional Secretariat to agree on next steps to finalize the draft Strategic Results Framework and the draft Regional Action Plan (5:00 pm to 6:00 pm, December 12)

Thank you