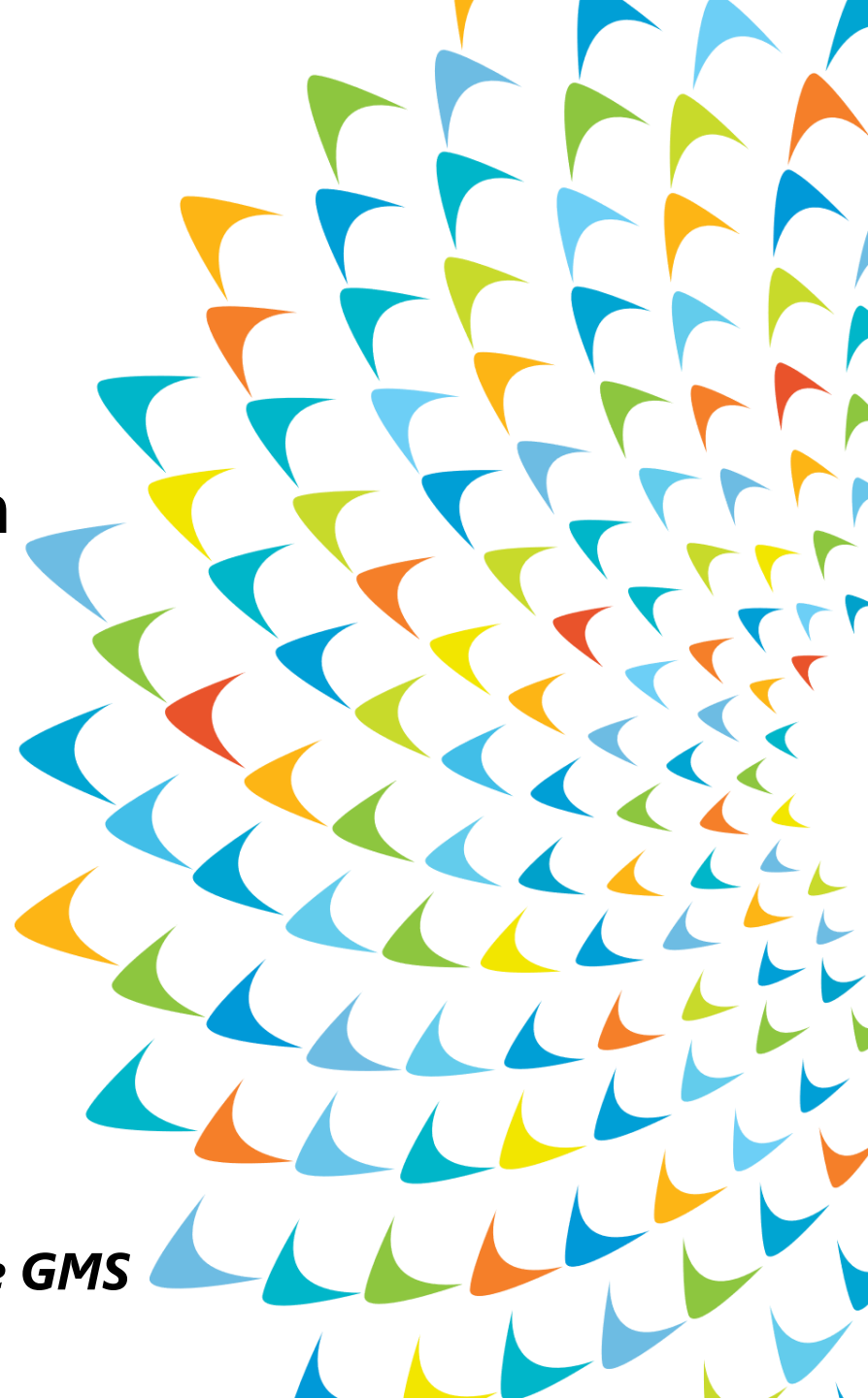




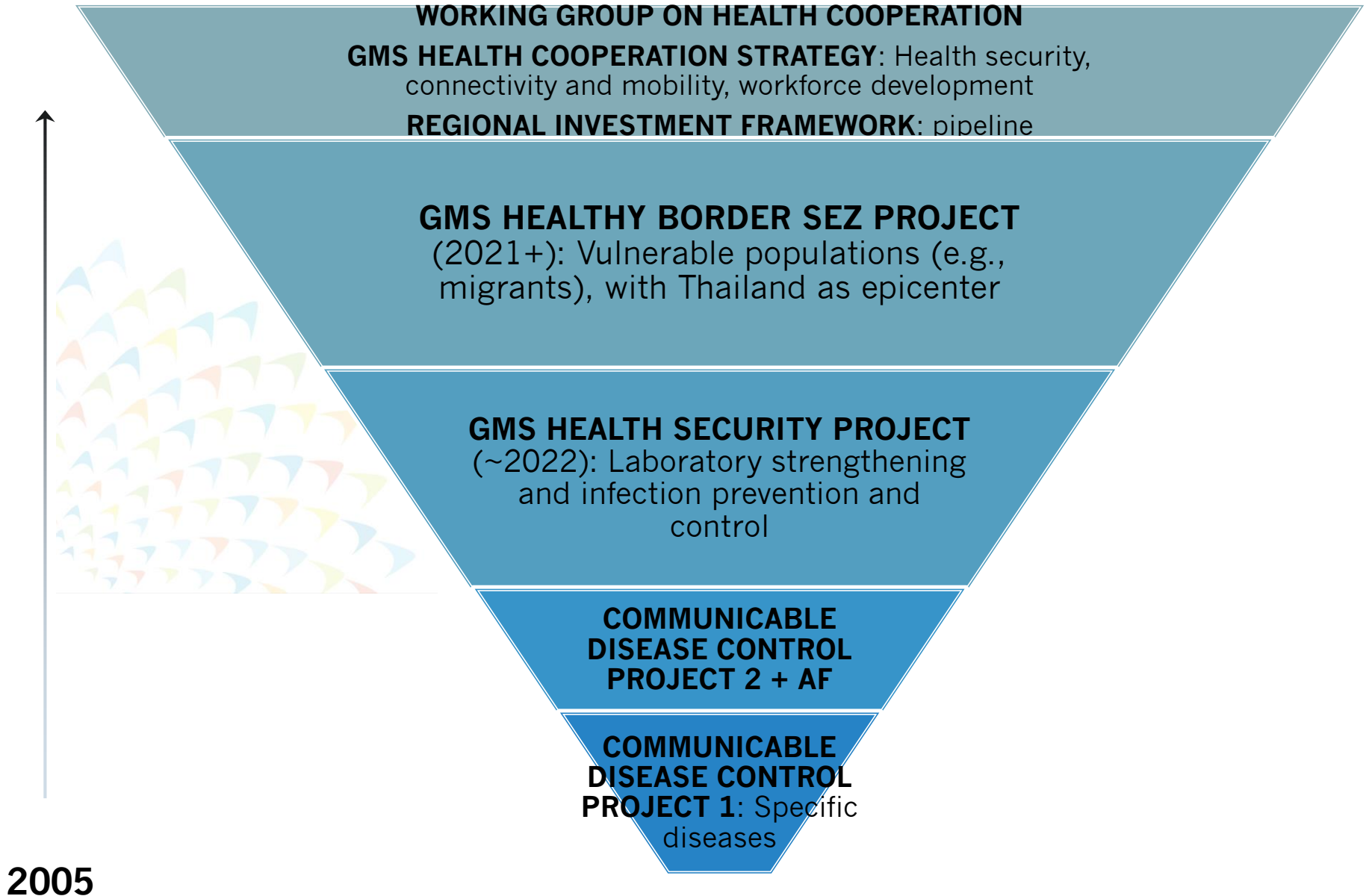
Greater Mekong Subregion Healthy Border Special Economic Zones Project

3rd Meeting of the GMS Working
Group on Health Cooperation
12-13 December 2019
Bangkok, Thailand

Advancing Health Partnerships in the GMS



HISTORY OF REGIONAL COOPERATION & INTEGRATION (GMS HEALTH)

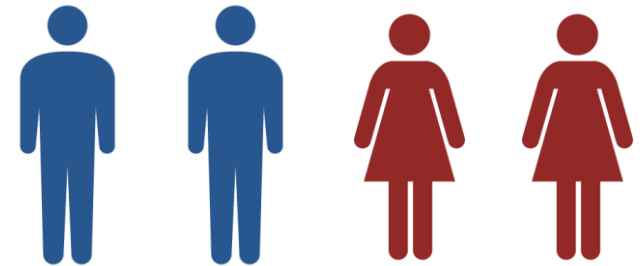
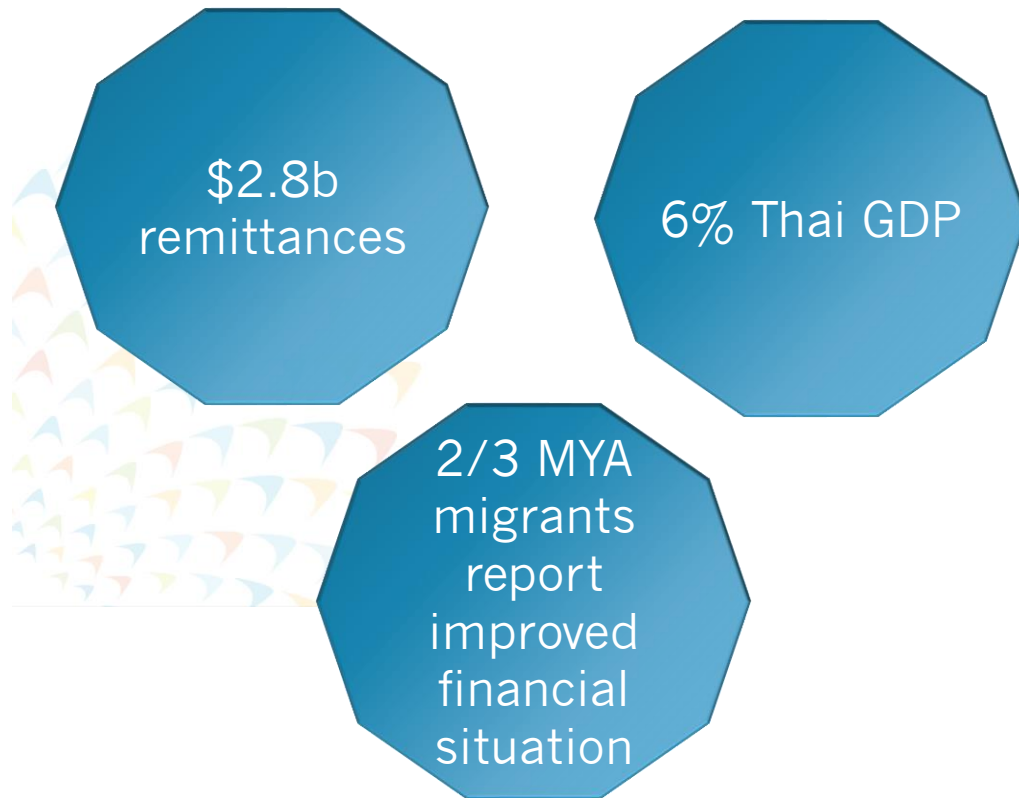


Regional integration drives migration

China's One Belt, One Road initiative

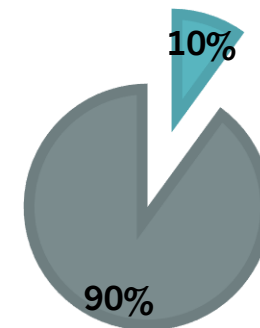


Low cost migrant labor helps to drive SEZ growth



WORKFORCE

■ Migrants ■ Thai



However migrants are vulnerable, especially when it comes to health.

ADB Alignment

1



GREATER MEKONG SUBREGION
HEALTH COOPERATION
STRATEGY 2019–2023

JUNE 2019

ASIAN DEVELOPMENT BANK

ADB

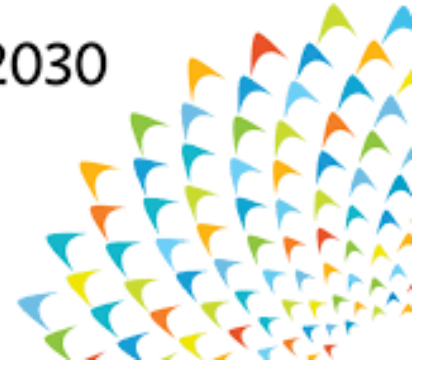
2

ADB

STRATEGY 2030

PROSPEROUS
INCLUSIVE
RESILIENT
SUSTAINABLE

ASIA AND THE PACIFIC



3




Greater Mekong Subregion

4

ADB **COUNTRY
PARTNERSHIP**
STRATEGY 2018-2023



Proposed GMS Healthy Border Special Economic Zones Project (Cambodia, Lao PDR, and Myanmar)

- 
- **Outcome:** Access to health services by migrant workers in SEZs on economic corridors improved
 - **Impact:** GMS cross border collaboration and migrant workers' quality of life improved
 - **Proposed outputs:**
 - 1: Inclusive cross-border and subregional cooperation on universal health coverage for migrant and mobile populations improved.
 - 2: Green, inclusive health infrastructure and services in and around SEZs built and services provided.
 - 3: Regional health financing mechanism established.

Output 1: Inclusive cross-border and subregional cooperation on universal health coverage for migrant and mobile populations improved

- Strengthen regional and cross-border information and coordination on migration and health;
- Harmonize national and sub-regional migration and health policies, frameworks and guidelines;
- Promote migrant worker-appropriate health services;
- Introduce occupational safety and health standards;
- Promote environmental health that prevent injury and exposures to hazardous agents;
- Implement pre- and post-departure support; and
- Create an application that disseminates health promotion and disease prevention, and key information gender-based violence.



Output 2: Green, inclusive health infrastructure in and around SEZs built and services provided



Selected SEZs will become models of integrated health services, targeting local and migrant populations

- Infrastructure will be upgraded, renovated, and/or built in cross-border areas of Cambodia, Lao PDR, and Myanmar.
- Innovative financing models, including public-private partnerships of health facilities and hospitals in selected specialized economic zones.
- Disaster risk reduction strategies, green building codes, low carbon technology, and gender- and migrant-friendly health infrastructure designs.
- Workplace programs promoting core labor standards of migrant workers.
- Low carbon technology and good practices in green health infrastructure.
- Inclusive, gender- and migrant- friendly design of health infrastructure.



Output 3: Regional health financing mechanism established



- Form legal agreements and MOU's to advance the operation of a regional health financial protection mechanism for migrants.
- Develop a regional health financing mechanism to allow documented migrants to access essential health services abroad, thus providing financial protection across borders.
- Undertake a thorough analysis of its design, structure, ITC functions (security) and financial sustainability and legal framework considering evidence-based practices from the private sector and civil society organizations.
- Tested, implemented and scaled up in selected SEZ's under the project.

Planned Implementation Arrangement

- Implementation period: June 2021-June 2026
- Executing Agencies: Ministry of Health (Cambodia and Lao PDR), Ministry of Public Health and National Economic and Social Development Board (Thailand), and Ministry of Health and Sports (Myanmar)
- Implementing Agencies: Ministry of Labor, and Ministry of Environment of each country



Indicative Financing Plan and Modality



- **Indicative Investment:** 72M
- **Financing modality:** Project loan
- **Additional grant resources:** gender, climate change adaptation and mitigation, and regional cooperation and integration

Next steps



- Hiring of consultant to prepare the project
- Inception meetings and project preparation
- Discussions with partners to explore knowledge and cofinancing partnerships
- Expected board approval Q1 2021