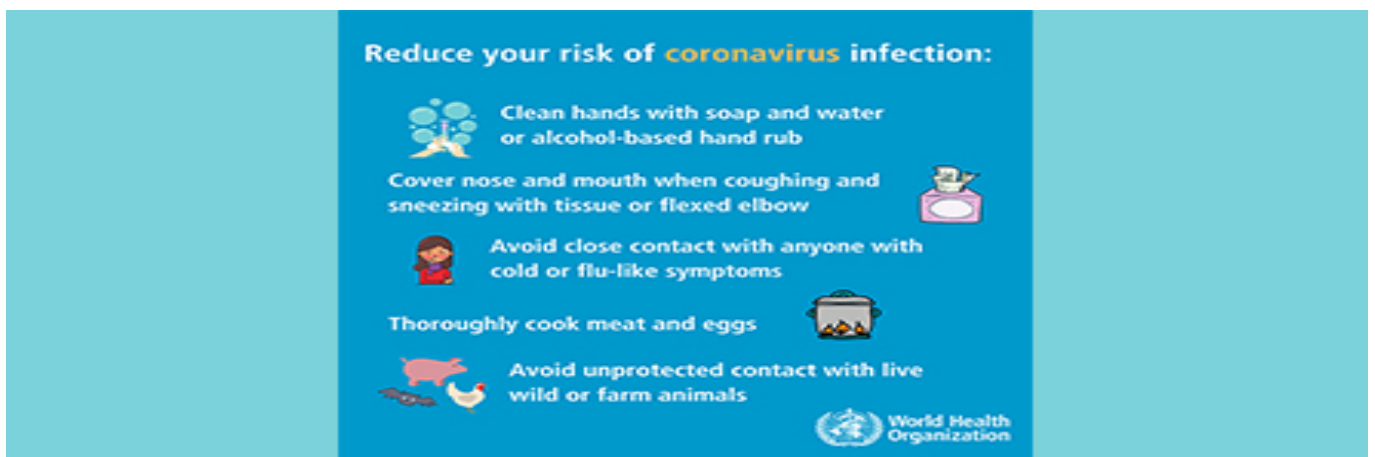




Published on *Greater Mekong Subregion (GMS)* (<https://greatermekong.org>)

[Home](#) > Novel Coronavirus

## Novel Coronavirus Happening Now



*Infographic from the [World Health Organization](#) [3] (WHO). Visit the WHO page for more downloadable information.*

The Secretariat of the Greater Mekong Subregion (GMS) Working Group on Health Cooperation is closely monitoring the situation surrounding the novel (new) coronavirus ([2019-nCoV](#) [4]). A growing number of countries have reported confirmed cases of 2019-nCoV.

The Asian Development Bank provides support for health ministries in the GMS to step up their preparedness and response to emerging infectious diseases and major public health threats, such as the 2019-nCoV, through the [GMS Health Security Project](#) [5].

Help keep yourself updated on the 2019-nCoV by visiting the following pages:

## **Global Health Institutions**

- [World Health Organization: Novel Coronavirus](#) [6]
- [Center for Disease Control and Prevention: 2019 Novel Coronavirus](#) [4]

## **GMS Health Agencies**

- [National Health Commission of the People's Republic of China](#) [7]
- [Cambodia Ministry of Health](#) [8]
- [Lao People's Democratic Republic Ministry of Health](#) [9]
- [Myanmar Ministry of Health and Sports](#) [10]
- [Thailand Ministry of Public Health](#) [11]
- [National Institute of Health of Thailand](#) [12]
- [Viet Nam Ministry of Health](#) [13]

*Note: Relevant links will be added as they become available.*

## **Related**

[GMS Risk Communication Specialists Stress Importance of Regional Approach for Health Emergencies](#) [14]

Last Updated: 3 February 2020

## **Greater Mekong Subregion Secretariat**

Regional Cooperation and Operations Coordination Division, Southeast Asia  
Department, Asian Development Bank  
Address: 6 ADB Avenue, Mandaluyong City 1550, Metro Manila, Philippines  
Telephone: +63 2 632 4444  
Fax: +63 2 636 2226  
Send an email to the [GMS Secretariat](#)

For inquires about the website, please email the [Web Team](#).

[Subscribe](#) to our newsletter.  
[View past issues](#).

Follow us on [Facebook](#), [Twitter](#) and [LinkedIn](#).

---

## GENERAL INFORMATION

[About Us](#)  
[Member Countries](#)  
[GMS Contacts](#)

---

## CONTENT

[Events](#)  
[Multimedia](#)  
[News](#)  
[Publications](#)  
[View All Content](#)

---

## PARTNERS

[Asian Development Bank](#)  
[Agriculture Information Network Service](#)  
[GMS Core Environment Program](#)  
[GMS Business Council](#)  
[Mekong Business Initiative](#)  
[Mekong Tourism Coordinating Office](#)  
[CAREC](#)  
[SASEC](#)  
[SAARC](#)

© 2019 Greater Mekong Subregion Secretariat. [Terms of Use.](#)

---

**Source URL:** <https://greatermekong.org/novel-coronavirus>

### Links

- [1] <https://greatermekong.org/novel-coronavirus>
- [2] <https://greatermekong.org/news-type/happening-now>
- [3] <https://www.who.int/emergencies/diseases/novel-coronavirus-2019/advice-for-public>
- [4] <https://www.cdc.gov/coronavirus/2019-ncov/summary.html>
- [5] <https://www.adb.org/projects/48118-002/main>
- [6] <https://www.who.int/emergencies/diseases/novel-coronavirus-2019>
- [7] <http://en.nhc.gov.cn/>
- [8] <http://moh.gov.kh/>
- [9] <https://www.moh.gov.la/index.php/lo-la/>
- [10] <https://www.mohs.gov.mm/>
- [11] <https://www.moph.go.th/>
- [12] <http://nih.dmsc.moph.go.th/indexeng.html>

[13] [https://www.moh.gov.vn/en\\_US/web/ministry-of-health](https://www.moh.gov.vn/en_US/web/ministry-of-health)

[14]

<https://greatermekong.org/gms-risk-communication-specialists-stress-importance-regional-approach-health-emergencies>