

Building a More Integrated, Prosperous, Sustainable, and Inclusive Greater Mekong Subregion

The **GMS Program Strategic Framework 2030 (GMS-2030)**, which was approved in 2021, establishes the approach for the development of the subregion for the next decade.

Vision and Mission: Develop an integrated, prosperous, sustainable, and inclusive subregion focused on its fundamental strengths of community, connectivity, and competitiveness, and that embraces innovative approaches across cross-cutting themes and emerging issues.

Progress of GMS-2030 Implementation

Capitalizing on innovation, digitalization, and new technology to drive growth, while managing their potential disruptive effects

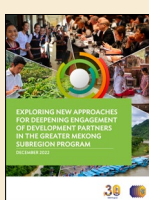


The **GMS Innovation Strategy for Development 2030** aims to establish the GMS as a dynamic hub of innovation, creativity, and sustainable development. It aims to accelerate progress toward GMS-2030 by supporting the establishment of a subregional innovation system that promotes cross-border collaboration. The strategy employs three key approaches: digitalization, green transition, and improved connectivity through investments in hard and soft infrastructure.



The **GMS Digital Economy Cooperation Initiative** provides a framework for GMS countries to start cooperation in all aspects of the digital revolution. The **GMS Digitalization Action Plan (2025-2027)** outlines specific actions and initiatives promoting inclusive digitalization and advanced technologies across three key sectors: tourism, agriculture, and trade and investment.

Transforming GMS as an open platform

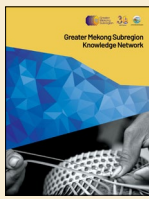


Deepening Development Partners' Engagement in the GMS explores new approaches to strengthening development partners' support to the subregion including investment project financing, technical assistance, and sharing of knowledge and expertise.



Strengthening Local Government Engagement in the Greater Mekong Subregion: A Strategic Approach aims to strengthen, expand, make more inclusive, and raise the visibility of the existing mechanisms for local government participation—the GMS Economic Corridors Forum and the GMS Governors' Forum.

Fostering deeper dialogue on policies and regulation, supported by knowledge-based solutions and capacity building



The **GMS Knowledge Network (GMSKN)** was established to provide expertise, stimulate discussion, and raise awareness about emerging policy issues in the GMS. In 2025, the GMSKN will launch the Knowledge, Innovation, Digitalization Initiative initially focusing on sustainable agrifood systems.



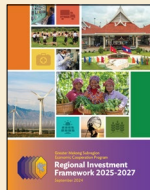
Around 1,300 civil servants and other GMS stakeholders have participated in various training programs under the **BIMP-EAGA, IMT-GT and GMS Capacity Building Program (B-I-G Program)**.

Pursuing a spatial approach to development



Development along various areas of **GMS economic corridors** continues. Studies have been supported promoting improved connectivity along the GMS North-South Economic Corridor and re-strategizing economic zones and border economic zones along the GMS Southern Economic Corridor.

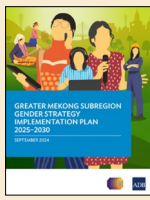
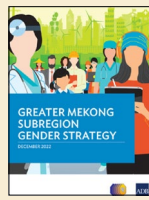
Maintaining a robust pipeline of priority projects in the GMS Regional Investment Framework (RIF)



The RIF, the GMS Program's three-year rolling pipeline of near-term priority projects, incorporates new project selection criteria. RIF is supported by capacity building and training programs.

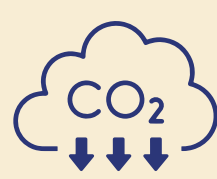
The latest **RIF 2025-2027** comprises 176 projects with a total estimated value of \$26.43 billion. The transport sector maintains the largest financing needs, while the agriculture sector has the most number of projects. The new RIF also features new projects in emerging areas: gender, labor mobility, innovation, and digitalization.

Mainstreaming gender equality in all GMS sectors



The **GMS Gender Strategy** endorsed in 2022 outlines a regional approach for advancing gender equality and women's empowerment in the subregion. The **GMS Gender Strategy Implementation Plan 2025-2030** aims to operationalize the Gender Strategy, including intersectional issues. It recommends activities, target outputs, and performance indicators to achieve the Gender Strategy's objectives. Gender will be mainstreamed in the **GMS RIF** while gender indicators or elements will be integrated into the **GMS-2030 Results Framework** and other GMS sector strategies.

Intensifying support for countries to meet their national and international green agenda commitments



The **GMS 2030 Strategic Framework for Accelerating Climate Action and Environmental Sustainability** aims to extend, expedite, and strengthen activities in climate and disaster resilience; low-carbon transition; pollution control and circular green economy; and nature-based solutions.

Progress in Cross-Border Transport Facilitation Agreement



After being suspended during the coronavirus disease (COVID) pandemic, the **Early Harvest Program of the GMS Cross-Border Transport Agreement (CBTA)** was reinstated from 2024-2026. A trial operation was launched in Kunming, People's Republic of China, in June 2024, representing the longest route yet attempted under the CBTA-EH.

Achieving sustainable agriculture and food security



The **Strategy for Promoting Safe and Environment Friendly Agri-Based Value Chains in the GMS** and the **Siem Reap Action Plan 2019-2022** enhance the institutional and technical capacity and awareness of GMS stakeholders on food safety, quality, and sustainable agri-food production, particularly through innovative technologies. Strengthening value chain integration of smallholder farmers, rural women, and small and medium-sized agro-enterprises continue to be supported.



The forthcoming **GMS 2030 Kunming Strategic Framework for Transformation of Agri-Food Systems** aims to catalyze investments for climate-resilient and low-carbon agriculture that can ensure sustainable production and distribution of safe and high quality agri-food products within GMS and beyond in an inclusive manner.

Achieving energy security

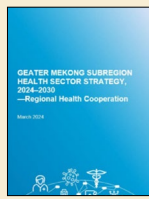


The **GMS Energy Transition Taskforce (ETTF)** was established in July 2022 to help countries transition to cleaner energy sources and improve energy efficiency; thus supporting countries realize their climate goals.

ETTF's work includes (i) regional power trade, (ii) technology capacity building, (iii) energy efficiency, and (iv) green finance.

The **GMS Energy Sector Strategy 2024-2030: Accelerating a Just Transition** will define the priorities of GMS energy cooperation toward a secure and green energy future for the region.

Regional health security guided by the One Health approach



GMS countries strengthened their efforts to implement the **GMS Health Cooperation Strategy 2019-2023**, aiming to accelerate a resilient, sustainable, and inclusive post-pandemic recovery and growth, guided by the **One Health** approach.

The **GMS Health Cooperation Strategy 2024-2030** focuses on building regional health security, developing climate-responsive and resilient health systems, and aims to achieve universal health coverage.

Supporting tourism initiatives aimed at restoring pre-pandemic levels of tourist arrivals across the countries



With **collective efforts** to safely reopen borders, improve visa openness, and reestablish cross-border air, land, water, and rail transport services, international tourist arrivals and receipts have steadily risen across the GMS. In 2023, the GMS recorded around 52 million international tourist arrivals.